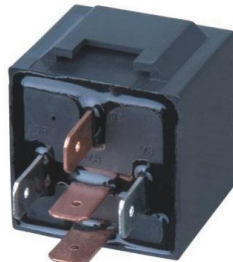




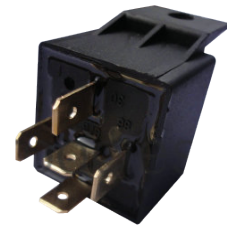
JD1912



JD1914



JD2914 with metal bracket



JD1914/JD1924 with plastic bracket

12V/24VDC Auto Relay

Product Name: Automotive Relay

Item No. : JD1912-12V/4P, JD2912-24V/4P, JD1914-12V/5P, JD2914 -24V/5P

Applicable Range: Universal automobile

Plug-in Leg No.: 4P, 5P

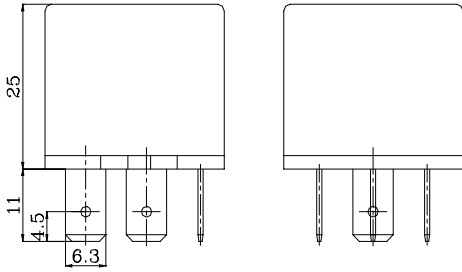
Product Details:

Contact Form	1A/1B/1C/1U/2A
Contact Material	Silver alloy
Rated Switching Current	30A/40A/60A/80A
Contact Resistance	50mΩ
Coil Voltage	12V/24V DC
Coil Power Consumption	1.8W
Between open Contacts	550V AC
Between Coil and Contacts	750V AC
Insulation Resistance	100mΩ
Electrical Life Expectancy	100000 times
Mechanical Life Expectancy	100000000 times
Operating Temperature Range	-40℃ ~+85℃
Operating Time	10ms
Release Time	5ms
Structure Washable	according to customer requirements
Terminal Shape	Plug-in,PCB
External Dimension	28×28×25.5mm
Shell Mode	Flat Shell,Metal Bracket,Plastic Bracket

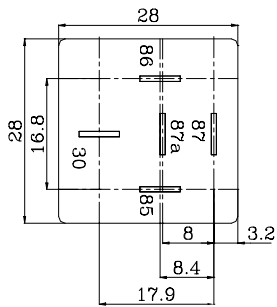
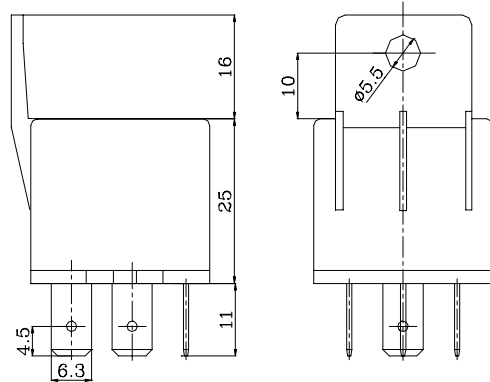
Contact Form: C=1C/O; A = N/O; B= N/C; U= 2 N/O

DIMENSIONS (Unit: mm)

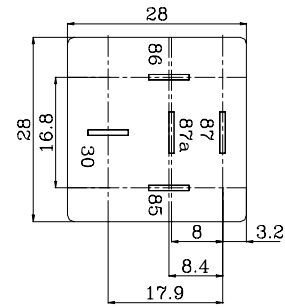
flat hous



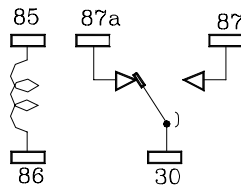
housing with bracket



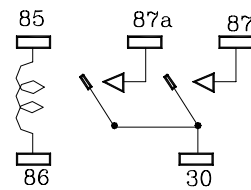
(BOTTOM VIEW)



A



C



U