

# Data Sheet

品 名

ITEM

**DC-AC INVERTER**

型 號

MODEL NO:

**QF82V2**

料 號

PART NO:

ENGINEER APPROVAL	SIGNATURE	DATE

**WinMate Communication INC**

9F/3F, No. 175 Ta-Tung Rd., Sec. 1, His-Chih, Taipei Hsien, Taiwan

TEL:886 2 26485758

FAX:886 2 26485161

**Data Sheet**
**1)General**

The DC to AC inverter is designed as a low noise high frequency high efficiency and as a low profile and light weight switching power supply.

**2).Feature**

- Applicable TO DUAL Tube
- Constant current output
- Possesses open load protection
- No load –output auto stop
- Meet TCO 99

**3. LCD (Application)**

LCD尺寸	Lcm Model	Brand	Remark
8.4",12.1",10.4" 12.1"		TOSHIBA	
		SHARP	
		CMO	

**4. Operating Conditions**

Item	Symbol	Conditions	MIN	MAX	Unit	Remark
Input Voltage	Vin		10.0	-	V	
Operating Temperature	Top	Ha=90%RH	0	65		
Storage Temperature	Tstg	Ha=95%RH	-10	80		
Operating Humidity	Hop	Ta=0 55	20	90	%RH	
Storage Humidity	Hstg	Ta=20 80	-	95	%RH	

**5.Operating Conditions**

Item	Symbol	Conditions	MIN.	TYP.	MAX.	Unit	Remark
Input Voltage	Vin	GND=0V	10.8	12	13.2	V	
Input Current (Low Brightness)	IinL	Vin=TYP. ±1% ON VR=MIN (Iout=MIN)	310	370	420	mA	
Input Current (High Brightness)	IinH	Vin=TYP. ±1% ON VR=MAX (Iout=MAX)	680	730	820	mA	
Lamp Current (Low Brightness)	IoutL	Vin=TYP. ±1% ON VR=MIN (Iout=MIN)	1.9	2.5	3.2	mA rms	
Lamp Current (High Brightness)	IoutH	Vin=TYP. ±1% ON VR=MAX (Iout=MAX)	-	5.5	6.0	mA rms	
Working Frequency			35	40	45	KHZ	
Dimming		Tube Current	>2:1	-	-		
Brightness Control		Connection of Voltage	2.5	-	0	V	
Output Voltage		CCFT Current = mA	-	-	-	V	

6.Connector

6-1. (P1) Input Connector

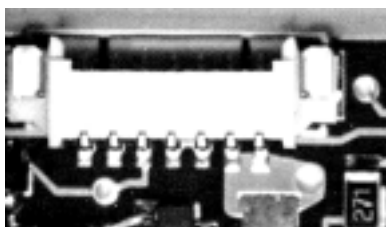
PIN No	Symbol	Description
1	Vin	DC+12V
2	Vin	DC+12V
3	.GND	Ground
4	.GND	Ground
5	Control	ON/OFF control ON=+5V OFF=0V
6	Brightness	Digital Brightness Control
7	.GND	Ground

6-2 (P2 & P3) Output Connector

PIN No	Symbol	Description
1	Output	Lamp High Voltage
2	Output	Lamp Low Voltage

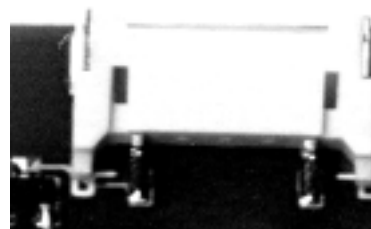
6-3 Connector Model No & Brand

Connector No.	Connector Parts No	Brand
P1	GL5326107	GL,MOLEX
P3	SM02	GL,JST
P3	SM02	GL,JST



**GL5326107**

(pin1)



**SM02**

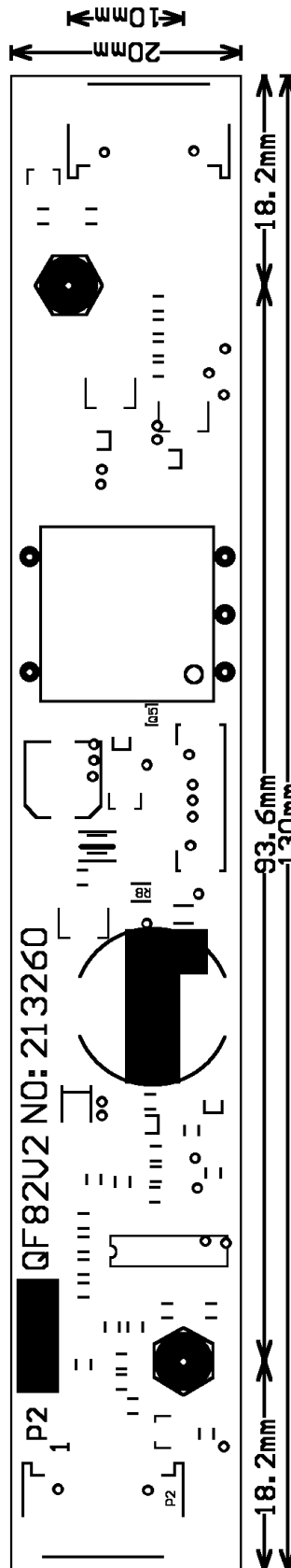
(pin)

7. Mechanical Characteristics

Dimension: 130mm \* 20mm \* 11mm

Weight: MAX. 17g

PCB DIMENSION





**8.4"**



## ● Specification

Model Name	R08T230-CHM1
Viewable Size Image	8.4"
Active Display Area(mm)	170.9(H)x128.2(V)
Pixel Pitch(mm)	0.267(H)x0.267(V)(typ. )
Number of Pixels	640x480
Contrast Ratio	450:1(typ. )
Display Color	262,144(6bit/colors)
Brightness(CD/m <sup>2</sup> )	400
Viewing Angel(CR>=10)	-65~65(H);-60~50(V)
Synchronization Range	
Horizontal/Vertical	31.5~68KHz/56~75Hz
Recommended Resolution	640x480@60Hz, 75Hz
Signal Connector	15pin D-sub
Power Source	AC100~240V, Universal, ±10%
Power Consumption	33W typical, normal operation
Power Management	VESA DPMS Compliant
Plug & Play	VESA DDC 1/2B
Optional Video Input	S-Video, Composite
Optional DVI Input	No
Optional Touch Screen	Resistive, Capacitive, SAW

Remarks: R08T200 series=VGA input only  
R08T230 series=VGA+Video input

