

Product Specification

Number: L-KLS4-R0902N-B10K-L25KQ

Name: Rotary Encoders

Specification: _____

Customer: _____

Date: 2024-07-15

Customer Signature:



WWW.KLSELE.COM

NINGBO KLS ELECTRONIC CO; LTD

Tel : 0086-574-86828566

Fax : 0086-574-86824882

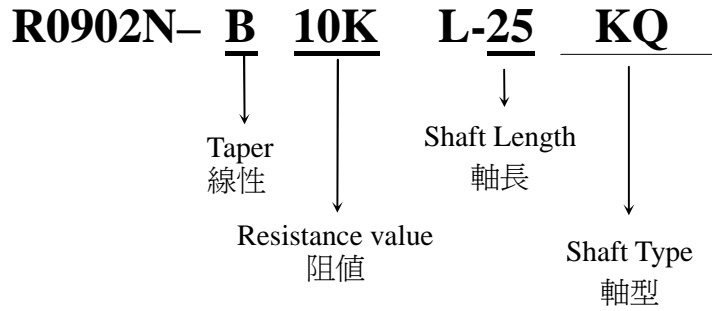
ADD : NO. 8-1, RONGXIA RD. XIAPU SHANQIAN
INDUSTRIAL ZONE BEILUN NINGBO ZHEJIANG.

Compile	Check	Review	Approval
Jenny	Jack.C		

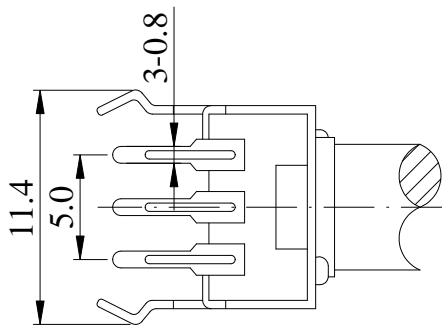
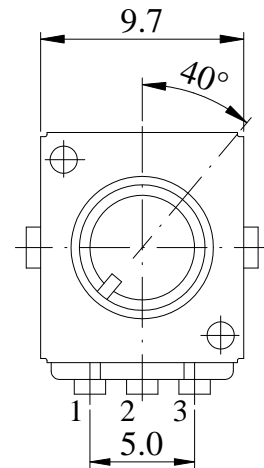
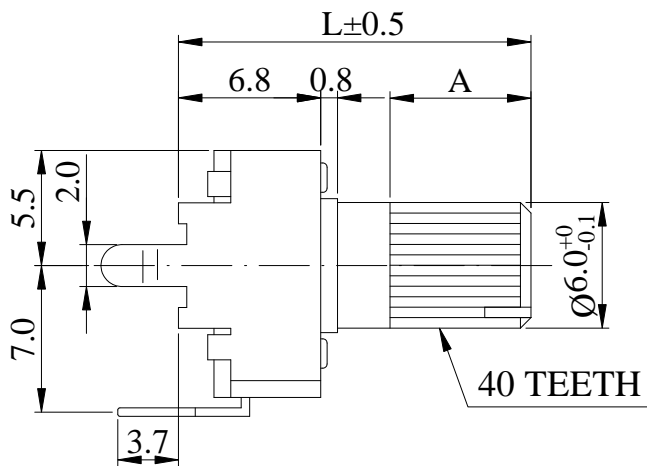
9mm Snap-In Insulated Shaft Potentiometer
9mm 嵌入式塑膠軸旋轉電位器



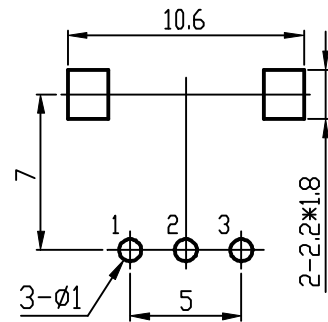
Part Number



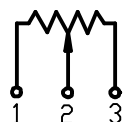
Dimensions 規格尺寸



PCB LAYOUT



CIRCUIT



9mm Snap-In Insulated Shaft Potentiometer
9mm 嵌入式塑膠軸旋轉電位器

General 一般事項

使用溫度範圍 Operating temperature	-10 °C ~ +70 °C
手工焊接 Manual soldering	300 °C Max 3sec

Electrical Characteristics 電氣特性

總阻值(R) Total resistance	10 KΩ
總阻值容許誤差 Resistance tolerance	±20%
阻值線性 Resistance taper	B
摺動雜音 Sliding noise	Less than 100mV
殘留阻值 Residual resistance	Term. 1~2 :Less than 20Ω Term. 2~3 :Less than 40Ω
絕緣阻抗 Insulation resistance	More than 100MΩ at DC 250V
定格電力 Rated power(W)	0.15W
最高使用電壓 Max. Operating voltage	AC 50V / DC 20V
耐電壓 Withstand voltage	1 Minute at AC 250 V

Mechanical Characteristics 機械特性

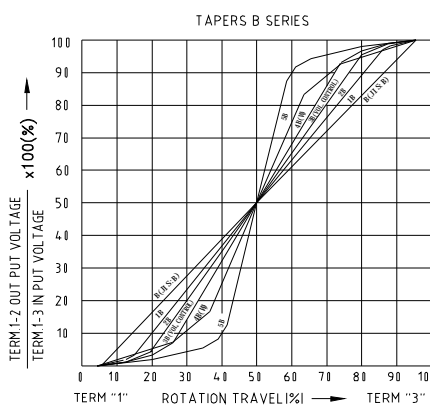
全回轉角度 Total rotational angle	280° ± 10°
全回轉扭力 Rotational torque	30 ~ 150 gf.cm
全回轉止強度 Rotational stopper strength	3Kgf.cm Min
軸推拉強度 Shaft push-pull strength	4Kgf. Max
迴轉壽命 Rotational life	10,000Cycles.

性图标准

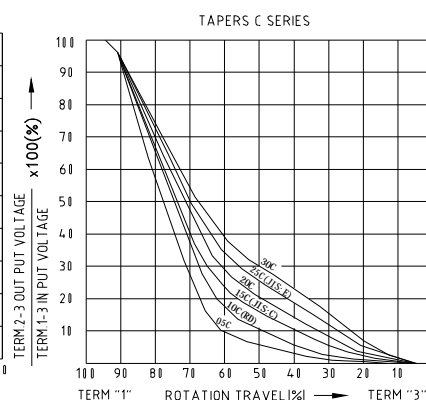
Electrical Characteristics

Resistance Taper Characteristics

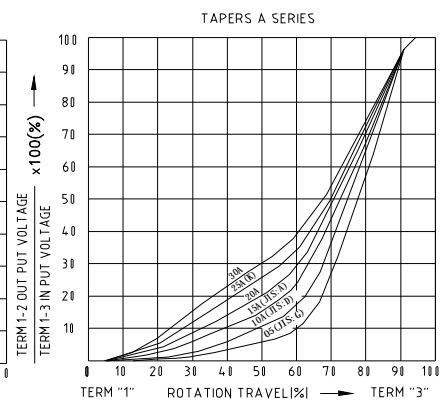
Resistance Taper Characteristic	Test Point Rotation (%)	$\frac{V_{1-2}}{V_{1-3}} \times 100$ (%)	$\frac{V_{2-3}}{V_{1-3}} \times 100$ (%)
A	60	15—30	————
B	50	40—60	————
C	60 (started from 3T)	————	15—30
D	50	2—15	————
E	50	————	15—35
M	30 (±5 degree)	5—15	————
	50	40—60	————
	70 (±5 degree)	85—95	————



- 0B
 1B
 2B
 3B
 4B
 5B



- 05C
 10C
 15C
 20C
 25C
 30C



- 05A
 10A
 15A
 20A
 25A
 30A