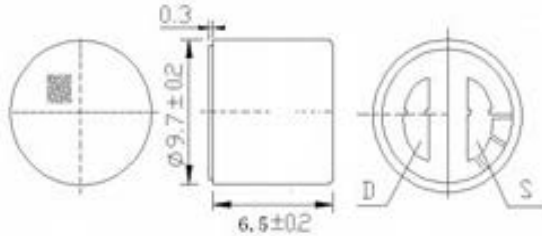
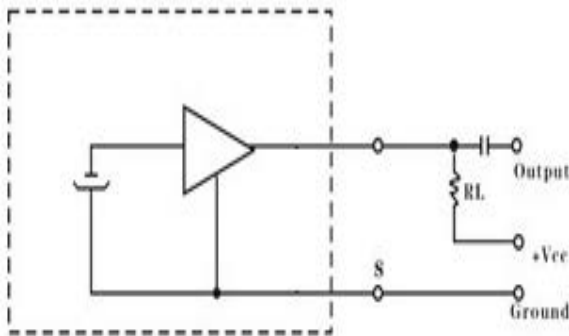


# QX9767

## Dimensions Drawing (Unit:mm)

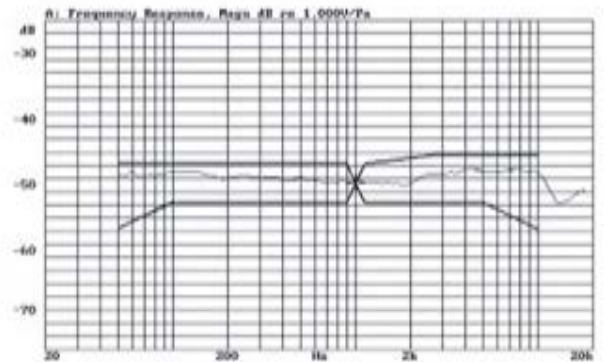


## Schematic Diagram Curve



$C=1\mu F R_L=2.2K\Omega V_{cc}=4.5V$

## Typical Frequency Response Curve



## Specifications

|                               |                            |
|-------------------------------|----------------------------|
| Dimensions                    | 9.7x6.7mm                  |
| Sensitivity(0dB=1v/Pa 1000Hz) | -48~66dB                   |
| Frequency Range               | 50~20KHz                   |
| Directivity                   | Omni Directional           |
| Impedance                     | Max2.2K $\Omega$ at f=1KHz |
| Current Consumption           | >500uA                     |
| Standard Operation Voltage    | 3V                         |
| Operation Voltage Range       | 1.5~10V                    |
| S/N Ratio                     | >58dB                      |